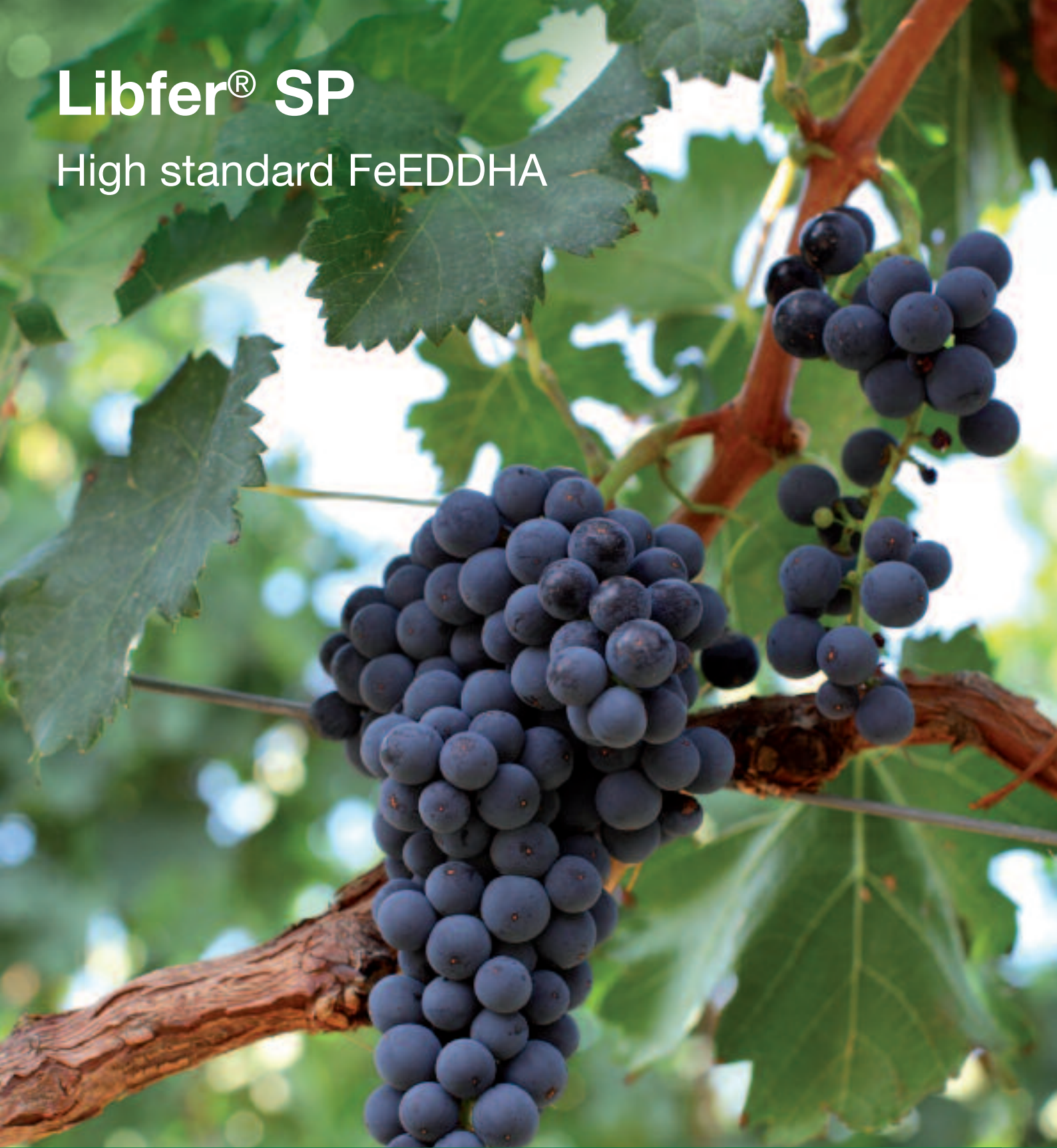


Libfer® SP

High standard FeEDDHA

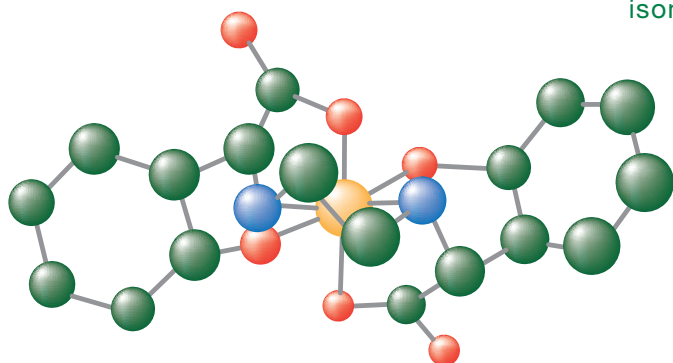


 **BASF**

The Chemical Company

Libfer® SP is the reliable way to correct iron deficiencies. Libfer dissolves rapidly and completely in water. And it is extremely stable to ensure iron remains available to crops even in highly alkaline calcareous soils. It's because at BASF, we create chemistry.

Effective. As the only iron compounds stable enough to remain in solution in alkaline soils, iron chelates are the most effective method of correcting iron deficiencies. Libfer SP has proved to be more effective than most. It is a FeEDDHA chelate with a high proportion of the most biologically effective isomer, the ortho-ortho isomer.

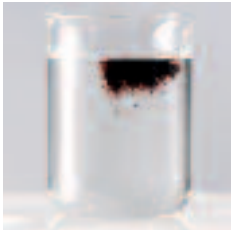


A graphic interpretation of the molecular structure of FeEDDHA

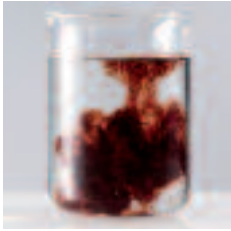
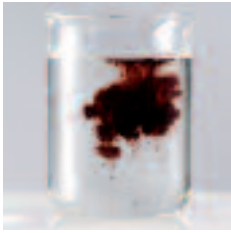
Solubility. Libfer SP dissolves rapidly and completely in water to make it more effective as a treatment for iron chlorosis. Essentially, it gets straight to the root of the problem. Unlike many low grade iron chelates, it doesn't leave fine residues of undissolved material which are unavailable to the plant even if they pass through irrigation nozzles. Inferior iron chelates block the nozzles completely which leads to additional cleaning or complete crop failure due to water shortage.

Innovators. Our Libfer SP comes in a microgranular form, superior to the dusty and difficult-to-dissolve alternatives.





Photographs taken at one-second intervals showing rapid dissolving Libfer SP when added to water



Quality. Libfer SP is manufactured to international quality standards. Strict quality control is applied using the most up-to-date analytical equipment and techniques available. It is also registered to internationally recognised quality standards. ISO 9001:2008

How to use. The best way to add Libfer SP to soil is to dissolve it in a convenient volume of water and apply as a coarse spray. It may be applied through a pressure injector or via 'fertigation' systems.

Crop	Rates of use
Field Crops	Apply 2.5 – 5.5 kg/ha just before sowing/planting or when iron deficiency symptoms begin to appear
Citrus	
Young trees	Apply 500 – 700 g per 100 m ²
Mature Trees	Apply 200 – 500 g per tree
Annual Maintenance	Apply 100 – 150 g per tree
Top Fruit	Apply 25 – 125 g per tree
Soft Fruit	Apply 750 – 1,500 g per 100 metres of row in a band or as a side dressing
Ornamental Shrubs	Apply 20 – 50 g per bush
Ornamental Plants	Apply 60 g per 10 m ²

These rates indicate upper and lower limits. Actual amounts used will depend upon the size of the crop and the degree of deficiency or both.

Europe

BASF SE
Care Chemicals & Formulators Europe
Carl-Bosch-Straße 38
67056 Ludwigshafen · Germany
Phone: +49 621 60-0
Fax: +49 621 60-42525
e-mail: industrial-formulators-eu@basf.com

North America

BASF Corporation
100 Campus Drive
07932 Florham Park, NJ · USA
Phone: 800 526-1072
+1 973 245-6000
Fax: +1 973 245-6002
e-mail: industrial-formulators-na@basf.com

South America

BASF S.A.
AV. Faria Lima, 3600
04538-132 São Paulo – SP · Brazil
Phone: +55 11 3043-2629
Fax: +55 11 3043-6989
e-mail: industrial-formulators-sa@basf.com

Asia Pacific

BASF East Asia
Regional Headquarters Ltd.
45th Floor, Jardine House
1 Connaught Place
Central Hong Kong · China
Phone: +852 273 10111
Fax: +852 273 49631
e-mail: industrial-formulators-hk@basf.com

www.care-chemicals-formulators.basf.com

Safety

We know of no ill effects that could have resulted from using our products for the purpose for which they are intended and from processing them in accordance with current practice. According to the experience we have gained up to now and other information at our disposal, our products do not exert any harmful effects on health, provided that they are used properly, due attention is given to the precautions necessary for handling chemicals, and the information and advice given in our safety data sheet are observed.

Labeling

Details about the classification and labeling of our products and further advice on safe handling are contained in the current safety data sheets.

Note

This document, or any answers or information provided herein by BASF, does not constitute a legally binding obligation of BASF. While the descriptions, designs, data and information contained herein are presented in good faith and believed to be accurate, it is provided for your guidance only. Because many factors may affect processing or application/use, we recommend that you make tests to determine the suitability of a product for your particular purpose prior to use. It does not relieve our customers from the obligation to perform a full inspection of the products upon delivery or any other obligation. NO WARRANTIES OF ANY KIND, EITHER EXPRESS OR IMPLIED, INCLUDING WARRANTIES OF MERCHANTABILITY OR FITNESS FOR A PARTICULAR PURPOSE, ARE MADE REGARDING PRODUCTS DESCRIBED OR DESIGNS, DATA OR INFORMATION SET FORTH, OR THAT THE PRODUCTS, DESIGNS, DATA OR INFORMATION MAY BE USED WITHOUT INFRINGING THE INTELLECTUAL PROPERTY RIGHTS OF OTHERS. IN NO CASE SHALL THE DESCRIPTIONS, INFORMATION, DATA OR DESIGNS PROVIDED BE CONSIDERED A PART OF OUR TERMS AND CONDITIONS OF SALE.